


Audatex *Estimating*TM

How to Install Audatex Estimating and AudaUpdate Quick Reference Guide

Table of Contents

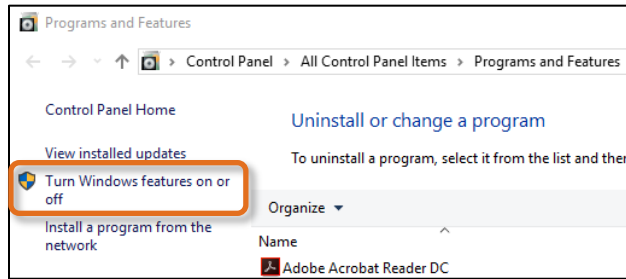
Prerequisites	2
New User / New Computer Setup	4

Prerequisites

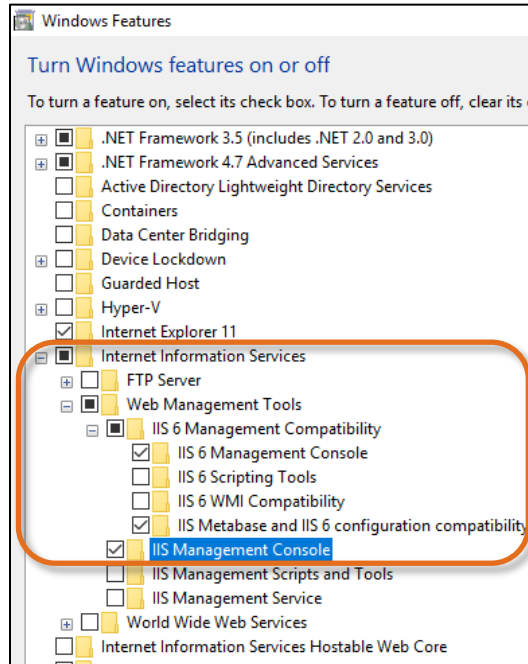
 **Important Note:** First time Audatex Estimating users, contact the Audatex Installation Team at (866) 881-8686.

1. Verify the computer meets system requirements for **Audatex Estimating**.
 - 1) Log into MySupportGarage.com.
 - 2) Click the **Product Support** tab.
 - 3) Select **Audatex Estimating** from the **Select Product** drop-down list.
 - 4) Type **System Requirements** in the **Search** field.
 - 5) Click the magnifying glass icon.
 - 6) Click the **Audatex Estimating System Requirements** link.
2. Log in to a Windows user account with administrative permissions.
3. Disable User Account Control.
 - 1) Click the **Start** button.
 - 2) Type **UAC** into the **Search** programs and files field.
 - 3) Click the **Change User Account Control** settings.
 - 4) Move the slider to the **Never notify** position.
 - 5) Click **OK**.
 - 6) Click **Yes** on the **User Account Control** prompt.
 - 7) Reboot the computer.
4. Install the latest [Adobe Reader](#) version.
5. Set Adobe Reader to run as the Administrator.
 - 1) Right click the **Adobe Reader** shortcut on the desktop.
 - 2) Select **Properties**.
 - 3) Click the **Compatibility** tab.
 - 4) Check the **Run this program as an administrator** check box.
6. Disabled Protected Mode and Enhanced Security in Adobe Reader.
 - 1) Click the **Edit** menu.
 - 2) Click **Preferences**.
 - 3) Click **Security (Enhanced)** on the left navigation.
 - 4) Deselect the **Enable Protected Mode** at startup box.
 - 5) Click the **Yes** button on the confirmation message window.
 - 6) Deselect the **Enable Enhanced Security** check box.
 - 7) Click **OK**.
 - 8) Close **Adobe Reader**.
7. Configure Internet Explorer settings for Audatex Estimating.
 - 1) Log into MySupportGarage.com.
 - 2) Click the **Product Support** tab.
 - 3) Select **Audatex Estimating** from the **Select Product** drop-down list.
 - 4) Type **Internet Explorer Settings** in the **Search** field.
 - 5) Click the magnifying glass icon.
 - 6) Click the **Internet Explorer Settings** link.
8. Audatex Estimating Multi-user server only: Install IIS.
 - 1) Close all applications.
 - 2) Press the **Windows + R** key combination to open the run box
 - 3) Type **appwiz.cpl**
 - 4) Press enter, the **Programs and Features** window opens.

- 5) Click the **Turn Windows features on or off** link.



- 6) Expand the **Windows Features** window.
 7) Click the plus next to the **Internet Information Services** check box to expand the sub-component selections.
 8) Expand the **Web Management Tools**.
 9) Expand **IIS 6 Management Compatibility**.
 1) Select **IIS 6 Management Console**.
Note: IIS 6 Metabase and IIS 6 configuration compatibility is the default selection. Manually select this option when necessary.
 2) Select **IIS Management Console**.



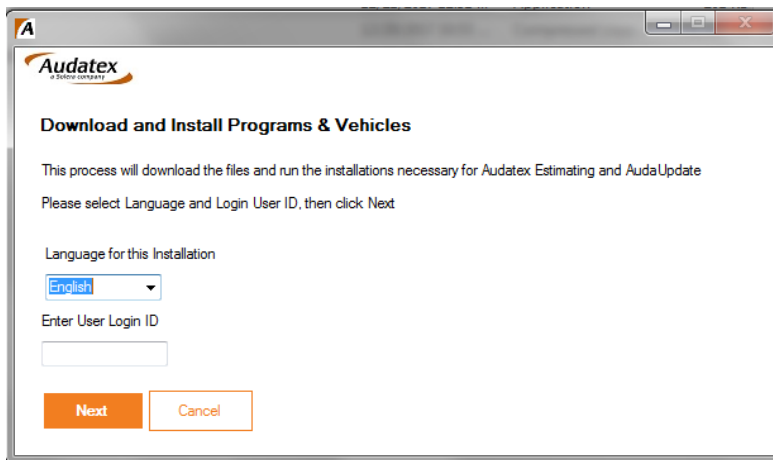
- 10) Expand **World Wide Web Services**.
 11) Expand **Application Development Features**.
 1) Select **ASP**.
Note: ISAPI Extensions is the default selection. Manually select this option when necessary.
 2) Select **ASP.NET 4.6**.
Note: ISAPI Filters, .NET Extensibility 4.6, and Default Document (found under the Common HTTP Features section) are the default selections. Manually select these options when necessary.
 12) Expand **Common HTTP Features**.
 13) Select **Static Content**.
 14) Click **OK**.
 15) Reboot the computer to complete the installation.

New User / New Computer Setup

These instructions are for users that need to install Audatex Estimating on a new machine or re-install Audatex Estimating.

Administrative rights on the computer are required to install Audatex Estimating. When needed, contact local IT / helpdesk for assistance.

1. Navigate to <http://audaupdate.com.edgesuite.net/AdxeAdmin.exe> and click the link to download the application.
2. The browser downloads the application to **c:\users\username\downloads**.
3. Click the download folder.
4. Double click the application.
The program launches.
5. **Optional:** Click the **Language** drop-down list to select French rather than English.
6. Type the **User ID** in the field.



- Click the **Next** button.
The Setup and Installation window opens.

Audatex

Setup and Installation

User Login ID [redacted]
 Company Name **Falcon Insurance F00**
 Country **United States**

Select Item(s) to Download

	Ver
<input checked="" type="checkbox"/> Audatex Estimating	8.0.414
<input checked="" type="checkbox"/> Parts, Labor and 2D Graphics	Dec 2017
<input checked="" type="checkbox"/> 3D Graphics	Dec 2017
<input checked="" type="checkbox"/> Frame Dimensions	Dec 2017
<input checked="" type="checkbox"/> AudaUpdate	3.2.1.179

Select Destination Folder

To install to a different folder click Browse and select another folder

Application Install Path C:\Program Files (x86)\adpe **Browse**
 Data Install Path C:\Program Files (x86)\adpe\Data\Vehicle **Browse**

Free Disk Space

Volume	Disk Space	Available	Required	Difference
Download/Install C:	256.06 GB	118.01 GB	20.2228 GB	97.79 GB

Select Update Scheduler

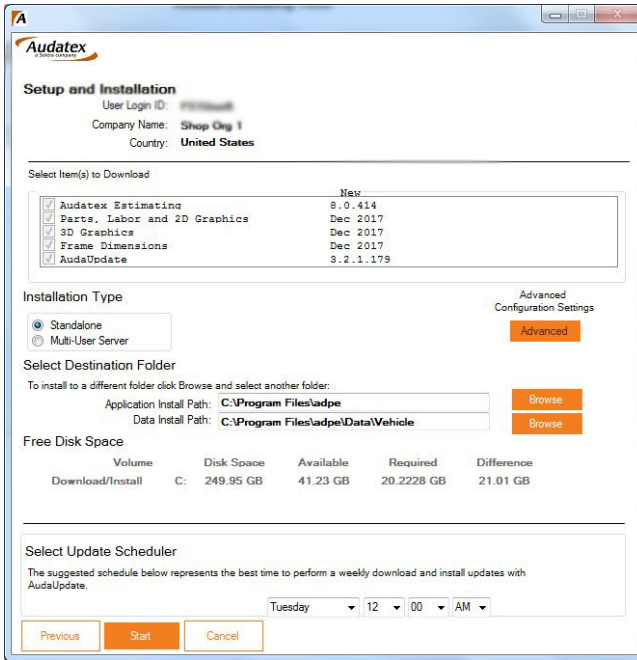
The suggested schedule below represents the best time to perform a weekly download and install updates with AudaUpdate

Monday 9:45 PM

Previous Start Cancel

- Optional:** Select the check box for the application(s).
- Optional:** Click the **Browse** button to select a different designation folder.
- Optional:** Repair Shop Organization with local server install only – click the **Advanced** button to configure the local server.
Recommended: *It is recommended that the server administrator complete this type of install.*
- Click the **Scheduled Day** drop-down list and select a day of the week.
Note: *The install cannot take place while Audatex Estimating is running. The computer must be on with an internet connection. Install may take several minutes to install the monthly update.*

12. Use the drop-down lists to select the best time for download.



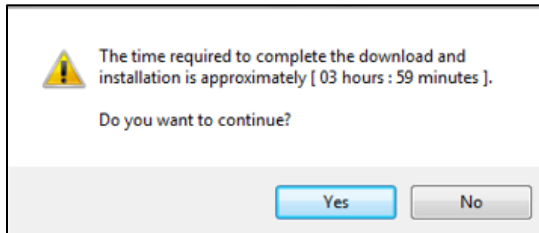
13. Click the **Start** button.

14. A message appears with the calculated time to download and install the selected application(s).

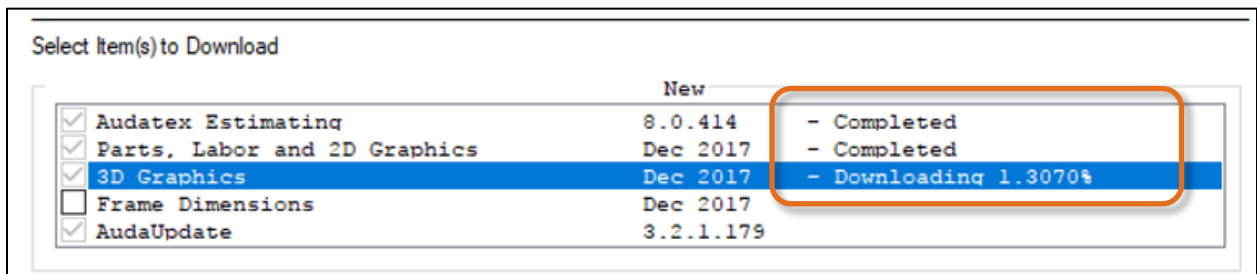
15. Click the **Yes** button to continue with the download.

~OR~

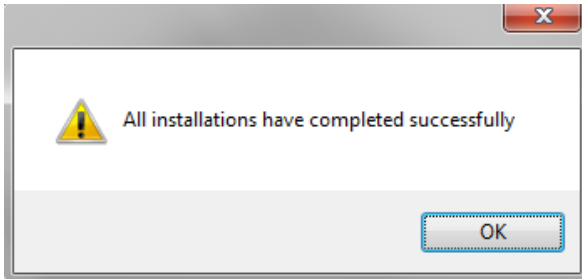
Click the **No** button to cancel the download.



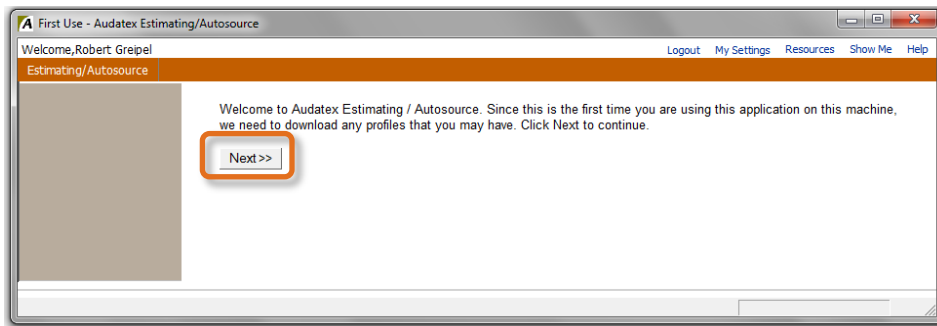
Note: While downloading the Setup Installation screen indicates the percentage and completed items of the install.



16. Click the **OK** button once the install is complete.



17. Double click the **Audatex** desktop icon.
18. Login to the application.
A Welcome message appears.
19. Click the **Next** button to download profiles.



20. Set the Audatex Estimating shortcut to run as the Administrator.
- 1) Right click on the desktop shortcut for the program.
 - 2) Select **Properties**.
 - 3) Click the **Compatibility** tab.
 - 4) Enable the **Run this program as an administrator** check box.
- Note:** When there are multiple users that log into the computer and use the program, then click the **Change settings for all users** button, then select the above check box.

Contact Us

24/7 Training & Technical Support

MySupportGarage.com

Email Support

AXUS.AASupportContact@audatex.com

Contact Us

(866) 420-2048
