

Audatex *Estimating*TM

Release Notes – Version 8.07

Table of Contents

Login Page Changes.....	2
Updated Terms and Conditions.....	2
Audatex Solutions Landing Page Change	2
Logo Change.....	2
Security	2
Http Only Flag (Audatex Estimating and Cosec).....	2
SQL Injection (Audatex Estimating and Cosec).....	3
JavaScript Vulnerabilities.....	3
Strict-Transport Security	3
Password Reset	3
Warning Banner	4
Autosource	4
Market Area Warning.....	4
Estimate Check Critical Rules.....	5

Login Page Changes

Updated Terms and Conditions

The terms and conditions paragraph on the Login page has been updated to remove GM specific text.

“The Audatex terms and conditions have been updated to reflect the disclosure of data to third parties connected with the estimatics workflow including, without limitation, support of the MyPriceLink part pricing methodology. To review the updated terms and conditions, please visit: <http://audatex.us/legal.aspx>.”

Audatex Solutions Landing Page Change

The **Visit Our Online Training Center** section on the landing page of www.audatexsolutions.com has changed to reflect the new Training and Product Support Site for U.S. users.

Visit Our Product Support Website
MySupportGarage.com

Access our product support site 24/7 to answer your questions and to learn more about our products.

Visit the MySupportGarage.com **E-Learning** tab to view all new Computer Based Training and Videos or browse our **Product Support** tab to view Quick Reference Guides, Release Notes, How To's, etc.

Login using your existing Audatex user ID and password.

Logo Change

All pages and reports to display the Audatex logo instead of AudaExplore.



Security

Secure Platform

Audatex is continuing our ongoing security hardening using industry leading penetration testing and application scanning tools.

Http Only Flag (Audatex Estimating and Cosec)

Audatex Estimating and Login sessions are protected against XSS cookie theft/security vulnerabilities.

SQL Injection (Audatex Estimating and Cosec)

Users using the Audatex Estimating and Cosec platforms and platform databases are protected against SQL Injection and data corruption attacks.

Sessions are protected against:

- Identity Spoofing
- Data Tampering
- Repudiation Issues
- System-Wide Data Disclosures
- Data Destruction
- Administrative Take-Over
- Cross-organizational data access and theft

JavaScript Vulnerabilities

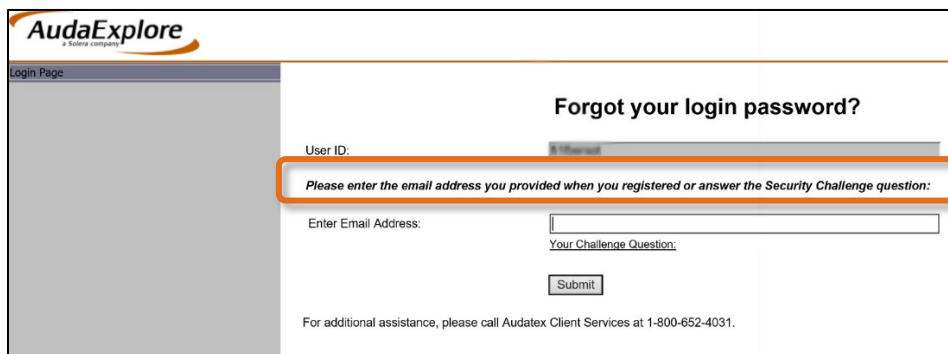
Audatex Estimating users are protected from JavaScript vulnerabilities by using only libraries that are known to be secure.

Strict-Transport Security

Audatex Estimating users are protected against protocol downgrade attacks and cookie hijacking. Enforces web-site access over HTTPS.

Password Reset

1. When going through Password Reset, and the user enters both the email and security question, the system will:
 - Prompt the user that only either the email OR the question needs to be filled in.



AudaExplore
a Solera company

Login Page

Forgot your login password?

User ID:

Please enter the email address you provided when you registered or answer the Security Challenge question:

Enter Email Address:

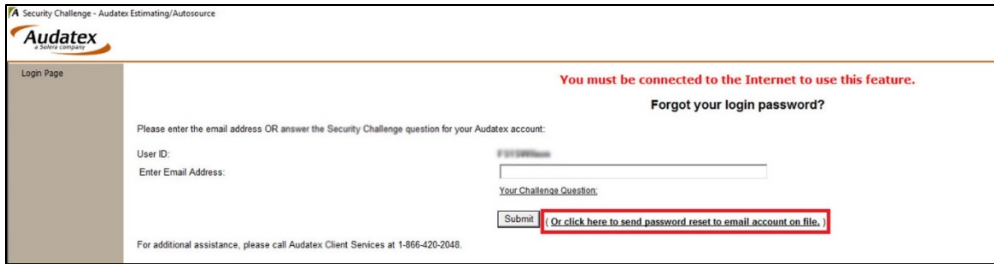
Your Challenge Question:

For additional assistance, please call Audatex Client Services at 1-800-652-4031.

~OR~

- The system will accept the entry for both when both questions are answered accurately.

- When going through reset password, when the user is unable to successfully recall the email or security question, an option is now available to send reset instructions to the email on file. This email contains a link that allows them to enter a new password.



The screenshot shows the Audatex login page. At the top left is the Audatex logo. Below it, the text reads 'Security Challenge - Audatex Estimating/Autosource'. The page title is 'Login Page'. A red banner at the top right says 'You must be connected to the Internet to use this feature.' Below this, the text 'Forgot your login password?' is displayed. The main form area contains the instruction 'Please enter the email address OR answer the Security Challenge question for your Audatex account:'. There are two input fields: 'User ID:' and 'Enter Email Address:'. Below these is a 'Your Challenge Question:' field. A 'Submit' button is located below the challenge question field. A red box highlights a link next to the 'Submit' button that reads 'Or click here to send password reset to email account on file.' At the bottom left, there is a note: 'For additional assistance, please call Audatex Client Services at 1-866-420-2048.'

Warning Banner

In case of an outage, Audatex will now have the ability to display a scrolling message as a banner on the audatexsolutions.com page.

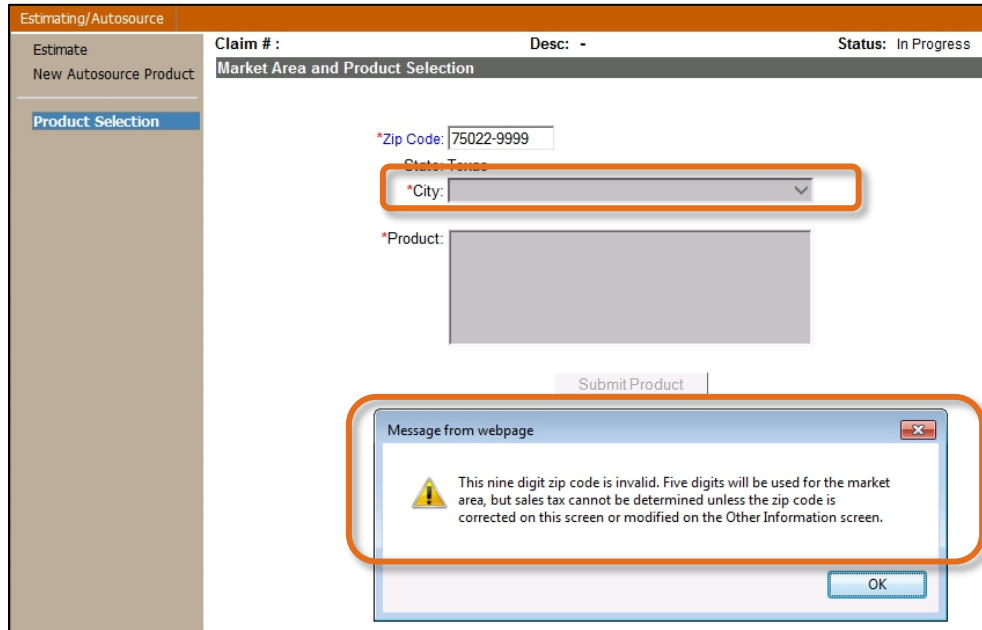
Autosource

Market Area Warning

Audatex Estimating / Autosource will warn the user when an invalid 9-digit zip code exists.

When the Market Area field has an invalid 9-digit zip code, but the 5-digit zip is valid, and the company has taxes enabled this message appears, **This nine digit zip code is invalid. Five digits will be used for the market area, but sales tax cannot be determined unless the zip is corrected on this screen or modified on the Other Information screen.**

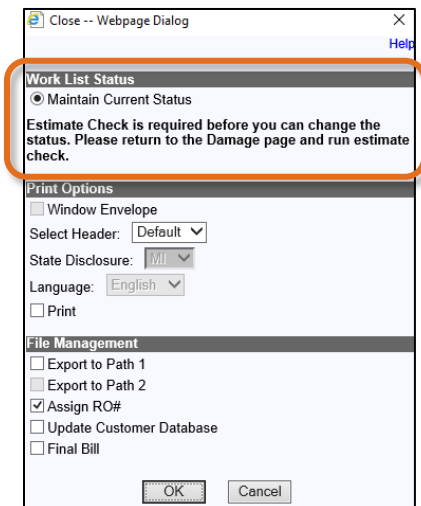
Also note that the **City and County** field has changed to **City**.



Estimate Check Critical Rules

This is an Estimate Check related change that provides the ability to designate certain rules as Critical Rules. When such a rule is triggered, it prevents the estimate from being completed. When a Critical Rule triggers, the in-progress estimate is prevented from being closed, regardless of mandatory pass setting or rule failure threshold. When the estimator clicks the **Close** link, the **Close** window only shows the **Maintain Current Status** selection and the following message:

- **English** - "Estimate Check is required before you can change the status. Please return to the Damage page and run estimate check."
- **Spanish** - "Una regla crítica en el chequeo del estimado impide la finalización de la evaluación. Regrese al estimado, haga los cambios necesarios de acuerdo a la regla, luego vuelva a ejecutar la verificación del estimado para reflejar los cambios."



Contact Us

U.S. 24/7 Training & Technical Support

MySupportGarage.com

U.S. Email Support

AXUS.AASupportContact@audatex.com

Contact Us

(866) 420-2048
